

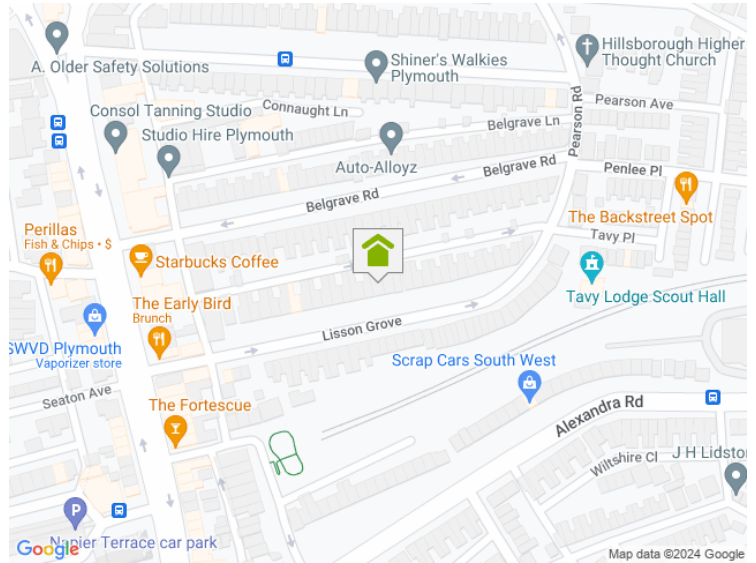
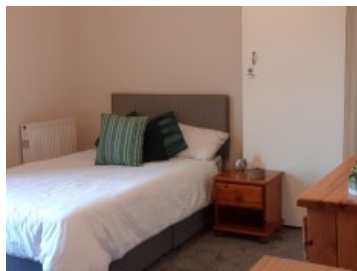
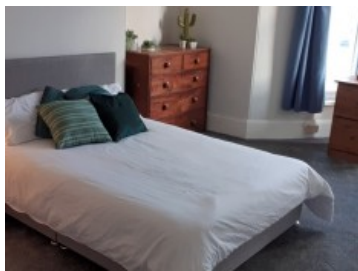
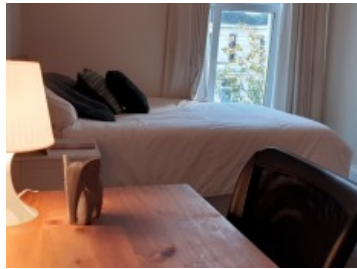


A HOME AFTER HOME^{LTD}
SALES & LETTING

Lisson Grove , PL4 7DL

7 Bedroom Terraced

FROM
£125.00
pw



Spacious double bedrooms available in a recently refurbished modern 7 bedrooms house. Situated just off Mutely Plain this house is ideally located for access to town and lots of local amenities. It is offered completely all inclusive to include Gas, water, electric and Council tax. Super fast virgin Broadband 300mg + Fully furnished and comfortable and spacious double rooms. Large communal living room with large TV. Modern stylish kitchen dining room with plenty of facilities. Utility room with washing machine and tumble dryer. Front garden and rear courtyard.

Key Features

- Double Beds
- Wi-Fi
- Fitted Kitchen
- Central Heating
- Recently Refurbished
- Double Glazed Windows

www.plymouthlettingandestateagents.co.uk

A Home After Home, 11-12 Gibbon Lane, Plymouth, Devon, PL4 8BR
contact@ahahlets.co.uk

01752 600 485