



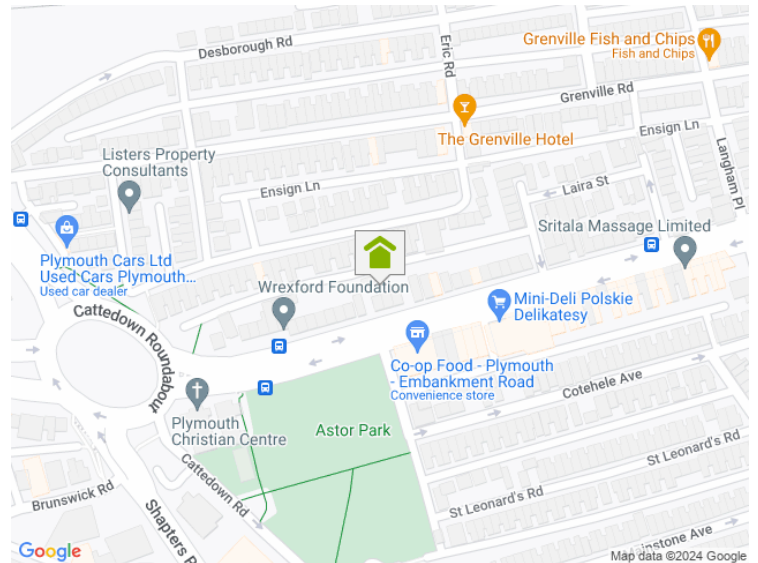
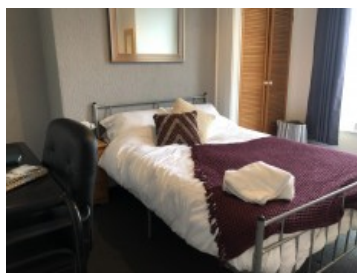
**A HOME AFTER HOME**<sup>LTD</sup>  
SALES & LETTING

Embankment Road, PL4 9HX

4 Bedroom Terraced

**£130.00**

PPPW



Modern and spacious 4 bed available for a group of 4 professionals. Contemporary kitchen with separate living room and 4 double bedrooms.

Large bathroom on ground floor with bath and shower cubicle.

Parking available for up to 2 cars. Fully all inclusive of bills and council tax band D

### Key Features

[www.plymouthlettingandestateagents.co.uk](http://www.plymouthlettingandestateagents.co.uk)

A Home After Home, 11-12 Gibbon Lane, Plymouth, Devon, PL4 8BR  
contact@ahahlets.co.uk

**01752 600 485**