



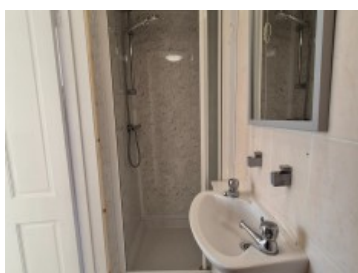
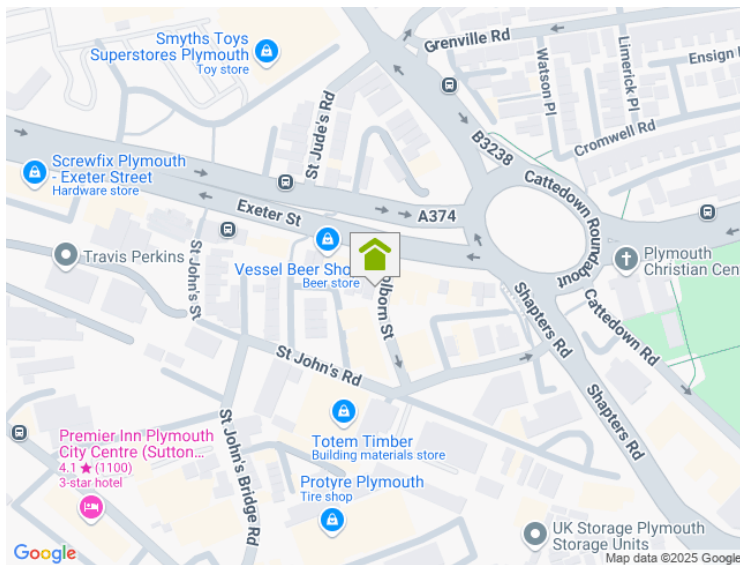
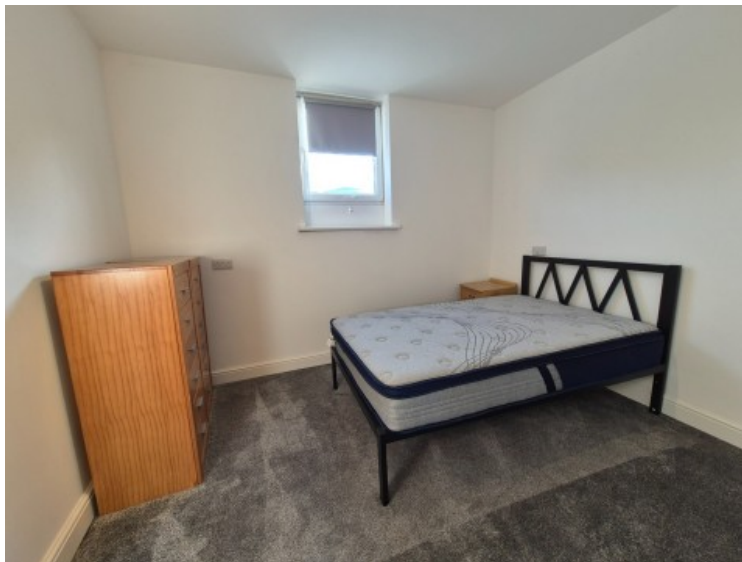
A HOME AFTER HOME LTD
SALES & LETTING

Holbourn Street, PL4 0NN

1 Bedroom Property

£137.00

PPPW inc. bills



En-suite double rooms now available in newly refurbished professional house-share offering a large shared open plan kitchen/lounge.

Bedrooms currently available are;

1, 2, 3, and 4

Price is inclusive of all bills, to include mains gas water and electric, broadband and the landlord pays the band A council tax and communal TV licence.

Parking; property is located in a parking permit zone, check with local authority about eligibility or free on street parking available with in a 10-15 min walk.

GCH, double glazing, security deposit £200, holding deposit £137

Key Features

- Double Beds
- Wi-Fi
- Fitted Kitchen
- Central Heating
- Double Glazed Windows

www.plymouthlettingandestateagents.co.uk

A Home After Home, 11-12 Gibbon Lane, Plymouth, Devon, PL4 8BR
contact@ahahlets.co.uk

01752 600 485