



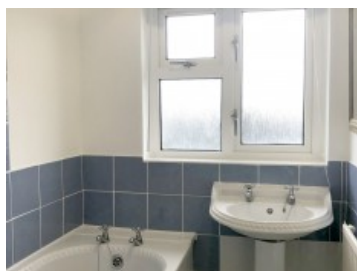
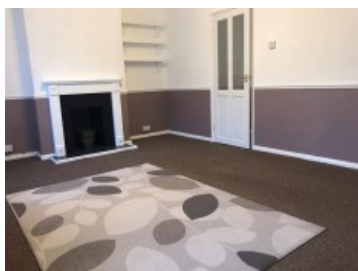
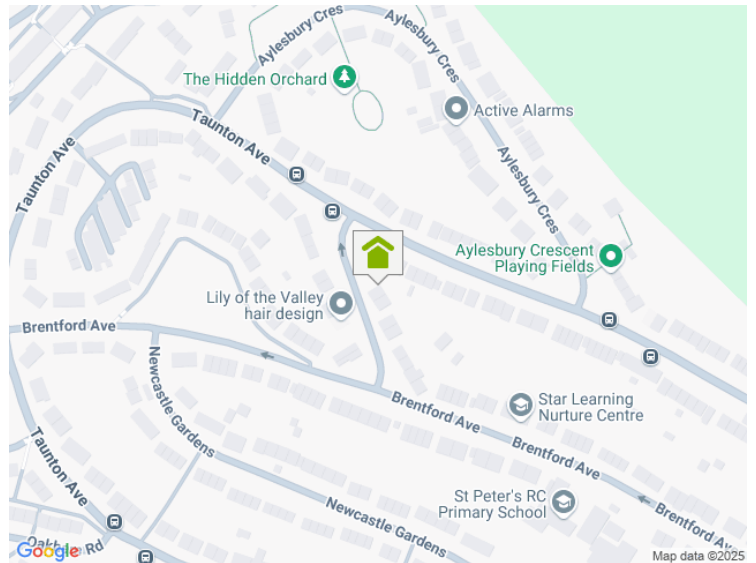
**A HOME AFTER HOME** LTD  
SALES & LETTING

**Hereford Road, Whitleigh, PL5 4HG**

**2 Bedroom Maisonette**

**£132,000.00**

Guide Price



A Home after Home are pleased to offer this First-floor, two-bed maisonette apartment situated in a extremely popular local area close to local schools and amenities, being sold as a Leasehold property with 69 years left on the lease.

Entering into the property from the front garden there is a spacious downstairs entrance hall with space for a cloak stand and shoe rack. Leading up the stairs to the first floor, straight ahead facing the front is the large fitted kitchen with built in oven and hob and space for washing machine, and fridge freezer. Situated on the opposite side of the corridor is a spacious tiled bathroom with a bath and shower overhead, to the left of this is a utility and boiler room and large separate lounge. Heading down the hall past the stairs are two large south facing double bedrooms with wooden laminate floors and on the right is the spacious living room with two large windows and fire place.

Council tax band A £1550.28 per year

EPC, 73C

[www.plymouthlettingandestateagents.co.uk](http://www.plymouthlettingandestateagents.co.uk)

A Home After Home, 11-12 Gibbon Lane, Plymouth, Devon, PL4 8BR  
contact@ahahlets.co.uk

**01752 600 485**