



# A HOME AFTER HOME<sup>LTD</sup>

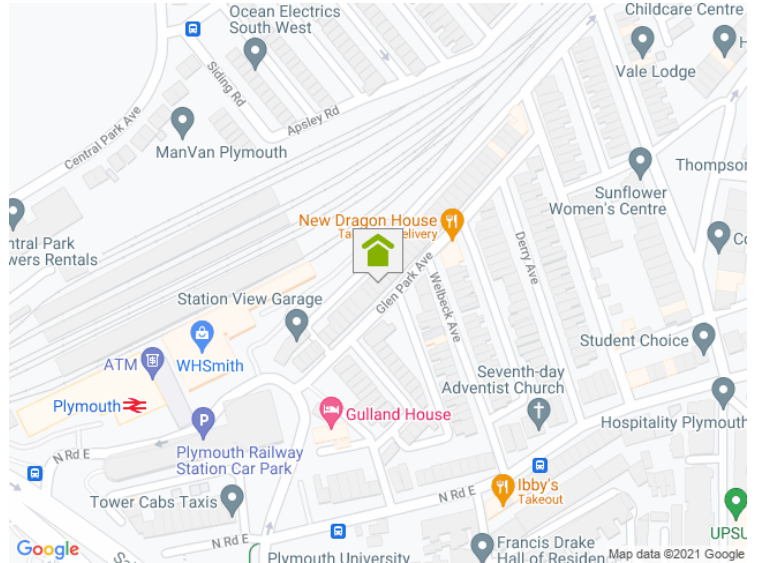
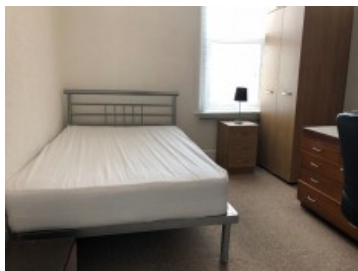
## SALES & LETTING

Glen Park Avenue , PL4 6BD

5 Bedroom Terraced

**£2,000.00**

pcm



Well maintained 5 bedroom House, situated in the city center close to the train station and University suitable for students, working professionals, and company lets. Just £2000pcm all inclusive of bills and council tax.

The property comprises of:

- \* 5 letting rooms
- \* 2 shower rooms
- \* Open-plan kitchen lounge
- \* Rear courtyard
- \* Upvc double glazed windows and doors, GCH

### Key Features

- Double Beds
- Fitted Kitchen
- Central Heating
- Double Glazed Windows

[www.plymouthlettingandestateagents.co.uk](http://www.plymouthlettingandestateagents.co.uk)

A Home After Home, 11-12 Gibbon Lane, Plymouth, Devon, PL4 8BR  
contact@ahahlets.co.uk

**01752 600 485**